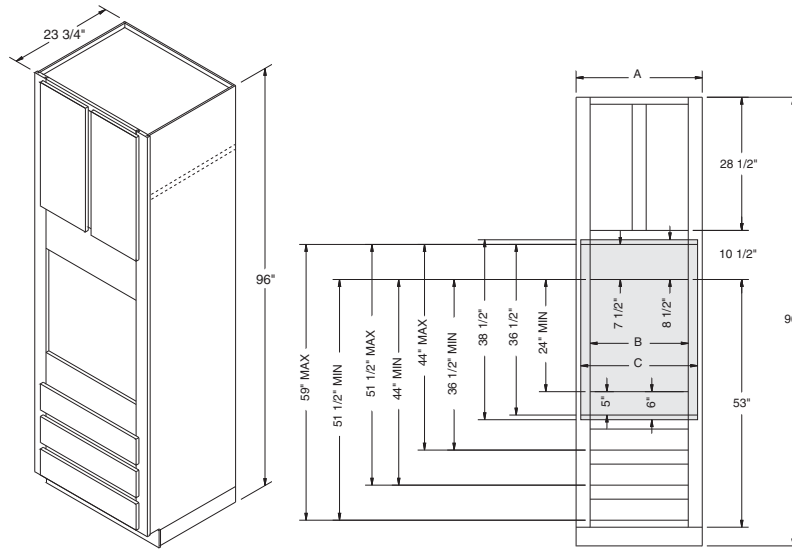


Oven Cabinets, 96" High, 23³/₄" Deep

OC3096 FX
OC3396 FX



A Cabinet Width	B Min. Opening	C Max. Opening
30"	24"	28 1/2"
33"	27"	31 1/2"

- ▶ Cabinets use standard natural maple interior, excluding white which has a white interior.
- ▶ Thermofoil and DLV will not withstand sustained exposure to temperatures in excess of 170°F. If using a self cleaning oven, it is recommended that you use at least a 1" Filler on each side of the Oven cabinet.

NOTES ✓

- ▶ Two doors, one adjustable shelf, and three drawers.
- ▶ All 96" cabinets are shipped as a 92" cabinet with 4" Toekick sub-assembly unattached.
- ▶ Oven shelf support kit included.
- ▶ For OCINSTALLKIT, see page 165.

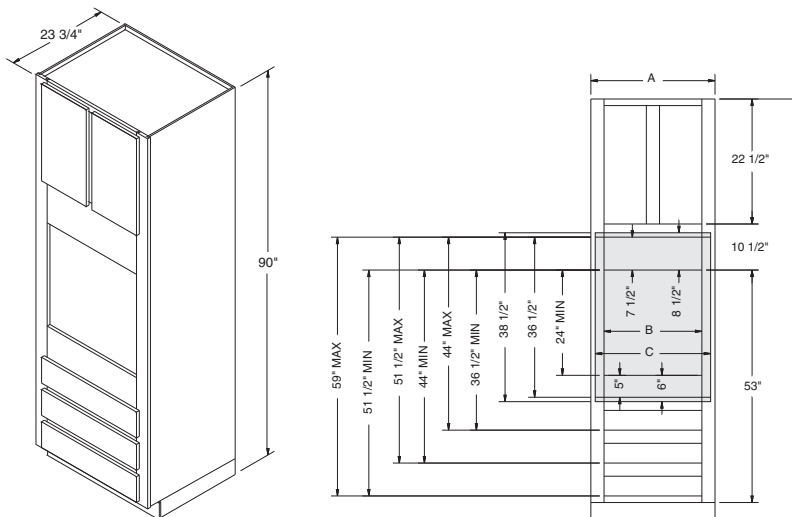
DESIGN SOLUTIONS

Work Zone **3** Cooking.

- ▶ Be sure to confirm a heat shield is built into your appliance by the manufacturer or install the heat shield included with your appliance.
- ▶ Oven cabinets are trimmable to accommodate a variety of appliance sizes.

Oven Cabinets, 90" High, 23³/₄" Deep

OC3090 FX
OC3390 FX



A Cabinet Width	B Min. Opening	C Max. Opening
30"	24"	28 1/2"
33"	27"	31 1/2"

NOTES ✓

- ▶ Two doors and three drawers.
- ▶ All 90" cabinets are shipped as an 86" cabinet with 4" Toekick sub-assembly unattached.
- ▶ Oven shelf support kit included.
- ▶ For OCINSTALLKIT, see page 165.

DESIGN SOLUTIONS

Work Zone **3** Cooking.

- ▶ Be sure to confirm a heat shield is built into your appliance by the manufacturer or install the heat shield included with your appliance.
- ▶ Oven cabinets are trimmable to accommodate a variety of appliance sizes.

NOTES ✓

- ▶ Two doors and three drawers.
- ▶ Oven shelf support kit included.
- ▶ For OCINSTALLKIT, see page 165.

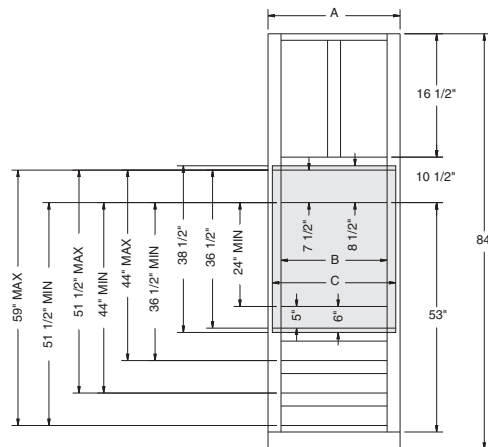
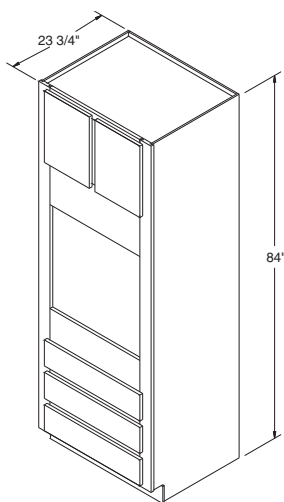
DESIGN SOLUTIONS

Work Zone **3** Cooking.

- ▶ Be sure to confirm a heat shield is built into your appliance by the manufacturer or install the heat shield included with your appliance.
- ▶ Oven cabinets are trimmable to accommodate a variety of appliance sizes.

Oven Cabinets, 84" High, 23³/₄" Deep

OC30 FX
OC33 FX



A	B	C
Cabinet Width	Min. Opening	Max. Opening
30"	24"	28 1/2"
33"	27"	31 1/2"

NOTES ✓

- ▶ Two doors, one adjustable shelf, and one drawer.
- ▶ All 96" cabinets are shipped as a 92" cabinet with 4" Toekick sub-assembly unattached.
- ▶ Oven shelf support kit included.
- ▶ For OCINSTALLKIT, see page 165.

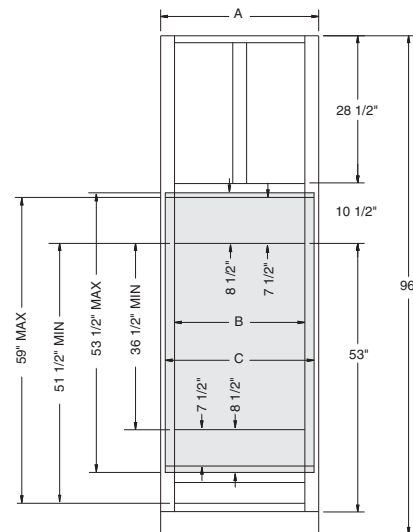
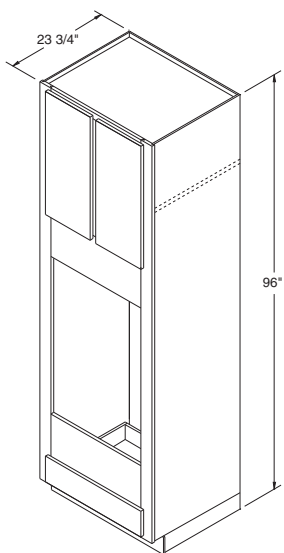
DESIGN SOLUTIONS

Work Zone **3** Cooking.

- ▶ Be sure to confirm a heat shield is built into your appliance by the manufacturer or install the heat shield included with your appliance.
- ▶ Oven cabinets are trimmable to accommodate a variety of appliance sizes.

Oven Cabinets Double, 96" High, 23³/₄" Deep

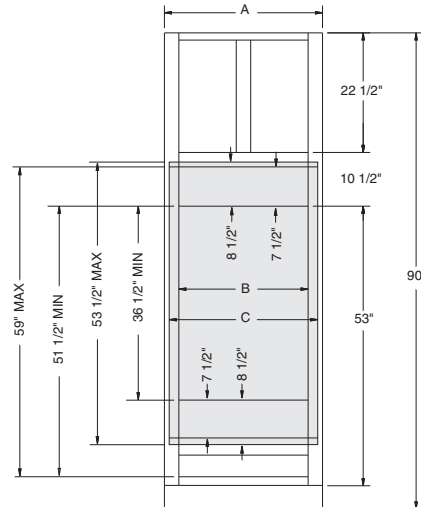
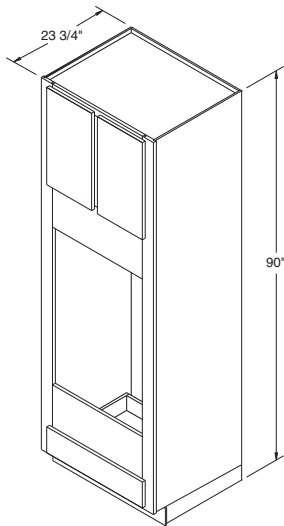
OCD3096 FX
OCD3396 FX



A	B	C
Cabinet Width	Min. Opening	Max. Opening
30"	24"	28 1/2"
33"	27"	31 1/2"

Oven Cabinets Double, 90" High, 23³/₄" Deep

OCD3090 FX
OCD3390 FX



A	B	C
Cabinet Width	Min. Opening	Max. Opening
30"	24"	28 1/2"
33"	27"	31 1/2"

NOTES ✓

- ▶ Two doors and one drawer.
- ▶ All 90" cabinets are shipped as an 86" cabinet with 4" Toekick sub-assembly unattached.
- ▶ Oven shelf support kit included.
- ▶ For OCINSTALLKIT, see page 165.

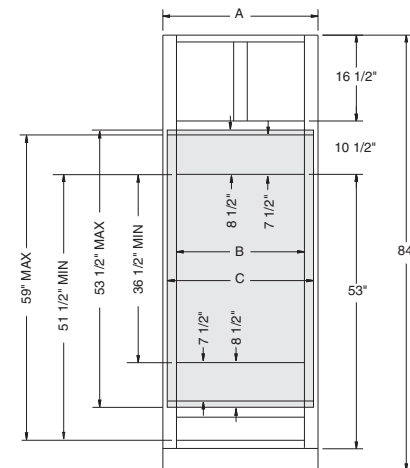
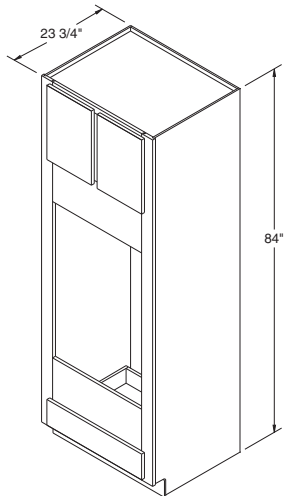
DESIGN SOLUTIONS

Work Zone **3** Cooking.

- ▶ Be sure to confirm a heat shield is built into your appliance by the manufacturer or install the heat shield included with your appliance.
- ▶ Oven cabinets are trimmable to accommodate a variety of appliance sizes.

Oven Cabinets Double, 84" High, 23³/₄" Deep

OCD30 FX
OCD33 FX



A	B	C
Cabinet Width	Min. Opening	Max. Opening
30"	24"	28 1/2"
33"	27"	31 1/2"

NOTES ✓

- ▶ Two doors and one drawer.
- ▶ Oven shelf support kit included.
- ▶ For OCINSTALLKIT, see page 165.

DESIGN SOLUTIONS

Work Zone **3** Cooking.

- ▶ Be sure to confirm a heat shield is built into your appliance by the manufacturer or install the heat shield included with your appliance.
- ▶ Oven cabinets are trimmable to accommodate a variety of appliance sizes.

NOTES ✓

- ▶ Two reduced depth adjustable shelves in top section.
 - ▶ Each upper door features two adjustable height door racks.
 - ▶ Four adjustable height roll trays in bottom section.
 - ▶ All 96" Pantry SuperCabinets™ are shipped as a 92" cabinet with 4" Toekick sub-assembly.
 - ▶ Includes a magnetic catch and strike plate to be field installed on bottom door for full overlay styles.
 - ▶ Doors cannot be cut for glass.
 - ▶ Large openings on miter styles will be two doors doweled together.
 - ▶ Center stile is attached to the left door on double door Pantry SuperCabinets™.
- ★Specify L or R on single door Pantry SuperCabinets™.

DESIGN SOLUTIONS

Work Zone 1 Food Storage.

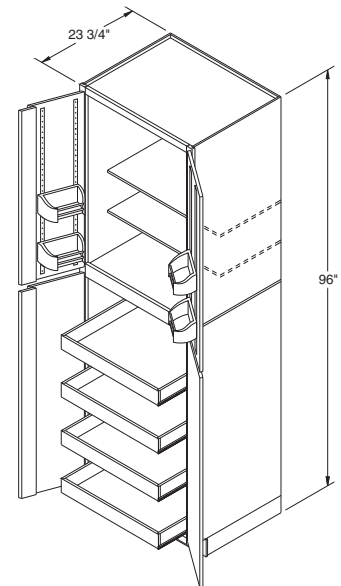
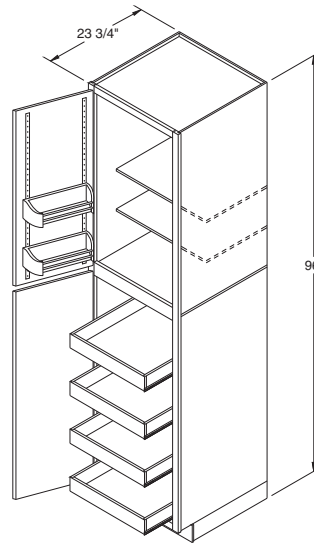
Pantry SuperCabinet™, 96" High, 23 1/4" Deep

Single Door

Double Door

- PSC1596** ★ *New*
- PSC1896** ★ *New*
- PSC2496** ★ *New*

- PSC3096** ★ *New*
- PSC3696** ★ *New*



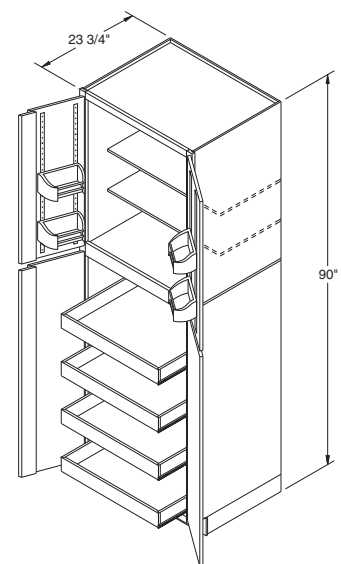
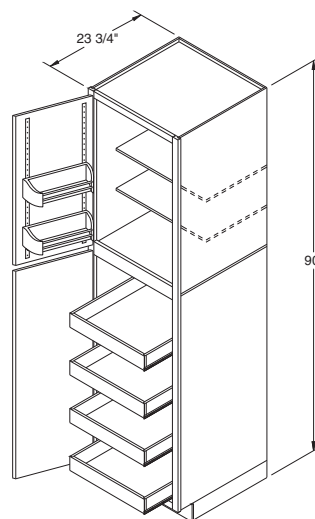
Pantry SuperCabinet™, 90" High, 23 1/4" Deep

Single Door

Double Door

- PSC1590** ★ *New*
- PSC1890** ★ *New*
- PSC2490** ★ *New*

- PSC3090** ★ *New*
- PSC3690** ★ *New*



NOTES ✓

- ▶ Two reduced depth adjustable shelves in top section.
 - ▶ Each upper door features two adjustable height door racks.
 - ▶ Four adjustable height roll trays in bottom section.
 - ▶ All 90" Pantry SuperCabinets™ are shipped as an 86" cabinet with 4" Toekick sub-assembly.
 - ▶ Includes a magnetic catch and strike plate to be field installed on bottom door for full overlay styles.
 - ▶ Doors cannot be cut for glass.
 - ▶ Large openings on miter styles will be two doors doweled together.
 - ▶ Center stile is attached to the left door on double door Pantry SuperCabinets™.
- ★Specify L or R on single door Pantry SuperCabinets™.

DESIGN SOLUTIONS

Work Zone 1 Food Storage.

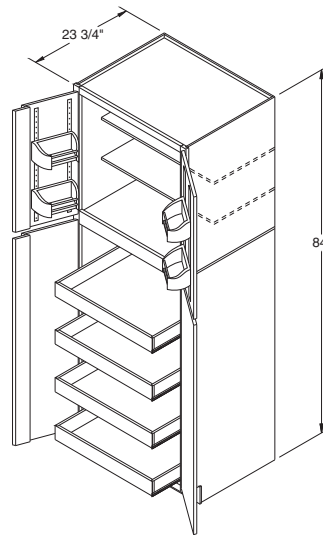
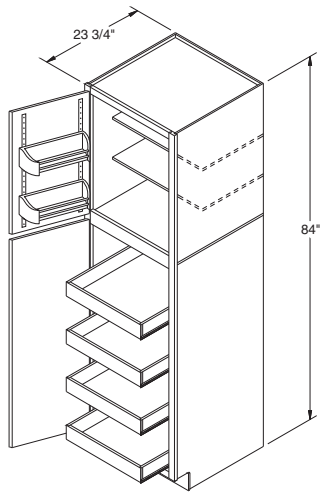
Pantry SuperCabinet™, 84" High, 23 1/4" Deep

Single Door

Double Door

PSC15 ★ *New*
PSC18 ★ *New*
PSC24 ★ *New*

PSC30 *New*
PSC36 *New*



NOTES ✓

- ▶ Two reduced depth adjustable shelves in top section.
- ▶ Each upper door features two adjustable height door racks.
- ▶ Four adjustable height roll trays in bottom section.
- ▶ Includes a magnetic catch and strike plate to be field installed on bottom door for full overlay styles.
- ▶ Doors cannot be cut for glass.
- ▶ Large openings on miter styles will be two doors doweled together.
- ▶ Center stile is attached to the left door on double door Pantry SuperCabinets™.

★Specify L or R on single door Pantry SuperCabinets™.

DESIGN SOLUTIONS

Work Zone **1** Food Storage.

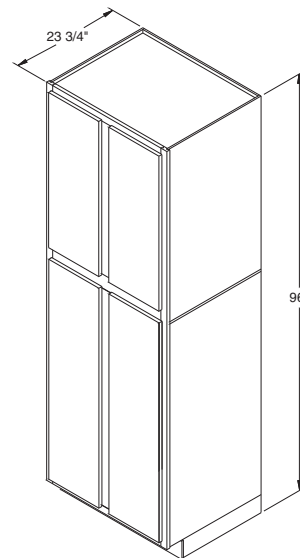
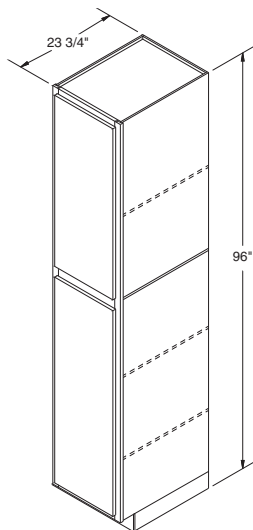
Utility Cabinets, 96" High, 23 3/4" Deep

Utility Single Door

Utility Double Door

U1596 ★
U1896 ★
U2496 ★

U3096
U3696



NOTES ✓

- ▶ All 96" Utility cabinets are shipped as a 92" cabinet with 4" Toekick sub-assembly.
 - ▶ 96" high Utility cabinets include one fixed shelf between doors and three adjustable shelves included in 15", 18", and 24" wide Utility cabinets.
 - ▶ Shelves not included on 30" and 36" wide Utility cabinets. For shelf and Roll Tray options see pages 166 & 167 - Accessory section - Pantry Kits.
 - ▶ Includes a magnetic catch and strike plate to be field installed on bottom door.
 - ▶ Lower doors cannot be cut for glass.
 - ▶ Large openings on miter door styles will be two doors doweled together.
 - ▶ Front Only Utility cabinets are available on 23 3/4" deep Utility cabinets (use FOU_).
 - ▶ Center stile is attached to the left door on double door Utility cabinets.
- ★Specify L or R on single door Utility cabinets.

DESIGN SOLUTIONS

Work Zone **1** Food Storage.

Work Zone **4** Cleanup.

- ▶ For a more elegant look, order top Utility doors in Doors Cut for Glass.

NOTES ✓

- ▶ All 96" Utility cabinets are shipped as a 92" cabinet with 4" Toekick sub-assembly.
- ▶ 96" high Utility cabinets include one fixed shelf between doors and three adjustable shelves included in 15", 18", and 24" wide Utility cabinets.
- ▶ Shelves not included on 30" and 36" wide Utility cabinets. For shelf and Roll Tray options see pages 166 & 167 - Accessory section - Pantry Kits.
- ▶ Includes a magnetic catch and strike plate to be field installed on bottom door.
- ▶ Lower doors cannot be cut for glass.
- ▶ Large openings on miter door styles will be two doors doweled together.
- ▶ Center stile is attached to the left door on double door Utility cabinets.

*Specify L or R on single door Utility cabinets.

DESIGN SOLUTIONS

Work Zone **1** Food Storage.

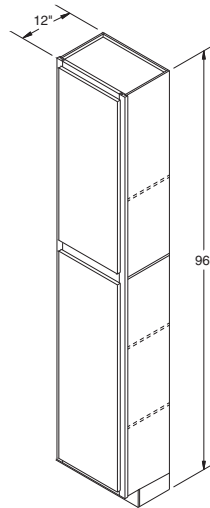
Work Zone **4** Cleanup.

▶ For a more elegant look, order top Utility doors in Doors Cut for Glass.

Utility Cabinets, 96" High, 12" Deep

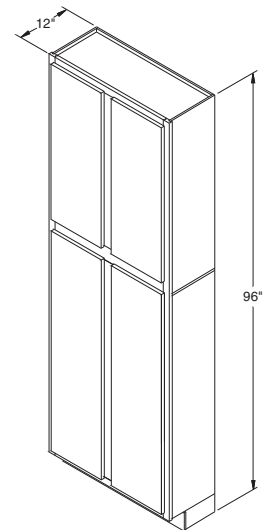
Utility Single Door

U159612 *
U189612 *
U249612 *



Utility Double Door

U309612
U369612



NOTES ✓

- ▶ 90" high Utility cabinets are shipped as an 86" high cabinet with a 4" toekick assembly.
- ▶ 90" high Utility cabinets include one fixed shelf between doors and three adjustable shelves included in 15", 18", and 24" wide Utility cabinets.
- ▶ Includes a magnetic catch and strike plate to be field installed on bottom door.
- ▶ Lower doors cannot be cut for glass.
- ▶ Large openings on miter door styles will be two doors doweled together.
- ▶ Shelves not included on 30" and 36" wide Utility cabinets. For shelf and Roll Tray options see pages 166 & 167 - Accessory section - Pantry Kits.
- ▶ Front Only Utility cabinets are available on 23 3/4" deep Utility cabinets (use FOU_ _).
- ▶ Center stile is attached to the left door on double door Utility cabinets.

*Specify L or R on single door Utility cabinets.

DESIGN SOLUTIONS

Work Zone **1** Food Storage.

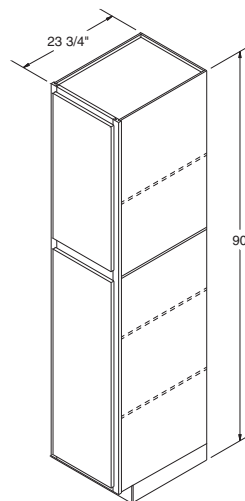
Work Zone **4** Cleanup.

▶ For a more elegant look, order top Utility doors in Doors Cut for Glass.

Utility Cabinets, 90" High, 23 3/4" Deep

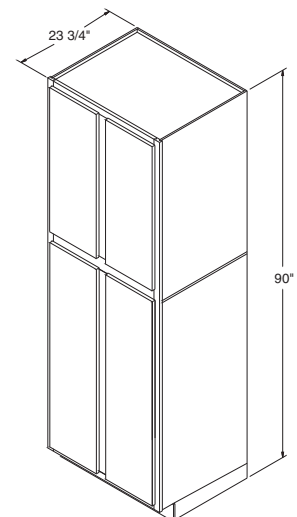
Utility Single Door

U1590 *
U1890 *
U2490 *



Utility Double Door

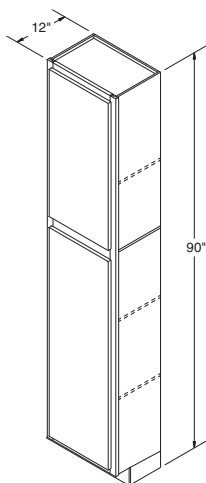
U3090
U3690



Utility Cabinets, 90" High, 12" Deep

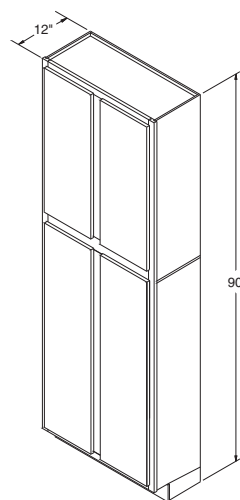
Utility Single Door

U159012 *
U189012 *
U249012 *



Utility Double Door

U309012
U369012



NOTES ✓

- ▶ 90" high Utility cabinets include one fixed shelf between doors and three adjustable shelves included in 15", 18", and 24" wide Utility cabinets.
- ▶ Includes a magnetic catch and strike plate to be field installed on bottom door.
- ▶ Lower doors cannot be cut for glass.
- ▶ Large openings on miter door styles will be two doors doweled together.
- ▶ Shelves not included on 30" and 36" wide Utility cabinets. For shelf and Roll Tray options see pages 166 & 167 - Accessory section - Pantry Kits.
- ▶ Center stile is attached to the left door on double door Utility cabinets.

★Specify L or R on single door Utility cabinets.

DESIGN SOLUTIONS

Work Zone **1** ▶ Food Storage.

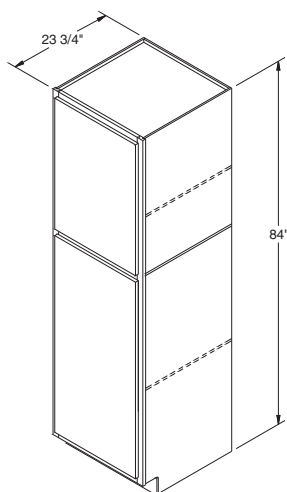
Work Zone **4** ▶ Cleanup.

- ▶ For a more elegant look, order top Utility doors in Doors Cut for Glass.

Utility Cabinets, 84" High, 23 3/4" Deep

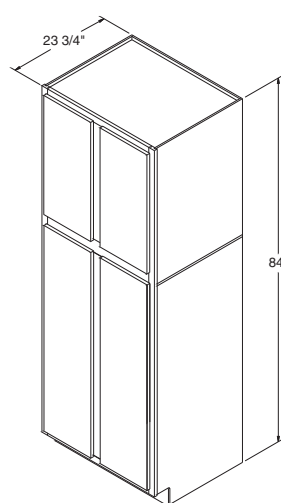
Utility Single Door

U15 *
U18 *
U24 *



Utility Double Door

U30
U36



NOTES ✓

- ▶ 84" high Utility cabinets include one fixed shelf between doors and two adjustable shelves included in 15", 18", and 24" wide Utility cabinets.
- ▶ Includes a magnetic catch and strike plate to be field installed on bottom door.
- ▶ Lower doors cannot be cut for glass.
- ▶ Large openings on miter door styles will be two doors doweled together.
- ▶ Shelves not included on 30" and 36" wide Utility cabinets. For shelf and Roll Tray options see pages 166 & 167 - Accessory section - Pantry Kits.
- ▶ Front Only Utility cabinets are available on 23 3/4" deep Utility cabinets (use FOU_).
- ▶ Center stile is attached to the left door on double door Utility cabinets.

★Specify L or R on single door Utility cabinets.

DESIGN SOLUTIONS

Work Zone **1** ▶ Food Storage.

Work Zone **4** ▶ Cleanup.

- ▶ For a more elegant look, order top Utility doors in Doors Cut for Glass.

NOTES ✓

- ▶ 84" high Utility cabinets include one fixed shelf between doors and two adjustable shelves included in 15", 18", and 24" wide Utility cabinets.
- ▶ Includes a magnetic catch and strike plate to be field installed on bottom door.
- ▶ Lower doors cannot be cut for glass.
- ▶ Large openings on miter door styles will be two doors doweled together.
- ▶ Shelves not included on 30" and 36" wide Utility cabinets. For shelf and Roll Tray options see pages 166 & 167 - Accessory section - Pantry Kits.
- ▶ Center stile is attached to the left door on double door Utility cabinets.

★Specify L or R on single door Utility cabinets.

DESIGN SOLUTIONS

Work Zone **1** Food Storage.

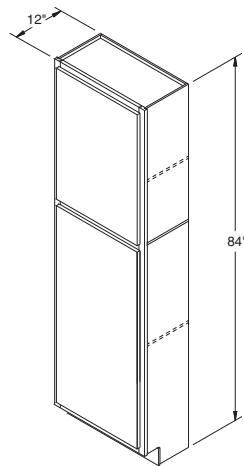
Work Zone **4** Cleanup.

- ▶ For a more elegant look, order top Utility doors in Doors Cut for Glass.

Utility Cabinets, 84" High, 12" Deep

Utility Single Door

- U1512 ***
- U1812 ***
- U2412 ***



Utility Double Door

- U3012**
- U3612**

