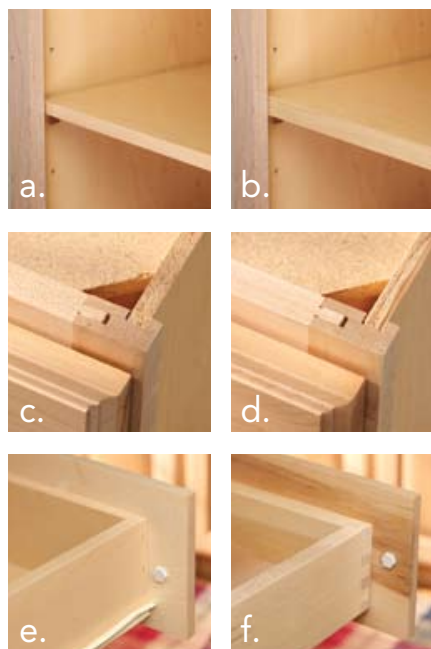


## Standard, Select, Ply Select



CONSTRUCTION Options

### ADJUSTABLE WALL SHELVES

- (a) 1/2" thick (standard)
- (b) 3/4" thick (select and ply select)

### CABINET SIDES

- (c) 3/8" thick furniture board (standard and select)
- (d) 3/8" thick, 5-ply plywood (ply select)

### DRAWER

- (e) 1/2" thick heavy-duty furniture board drawers (standard)
- (f) 3/4" thick all-wood dovetail drawers with concealed glides (select and ply select)
- (g) FX UPGRADE - 3/4"\* thick all-wood dovetail drawer with concealed full extension glides and optional Smart Stop stopping mechanism

- Drawer upgrade available with select & ply select construction options.

STANDARD - (a) 1/2" thick adjustable wall shelves, (c) 3/8" thick furniture board cabinet sides, (e) 1/2" thick heavy-duty furniture board drawers

SELECT - (b) 3/4" thick adjustable wall shelves, (c) 3/8" thick furniture board cabinet sides, (f) 3/4" thick all-wood dovetail drawers with concealed glides

PLY SELECT - (b) 3/4" thick adjustable wall shelves, (d) 3/8" thick plywood cabinet sides, (f) 3/4" thick all-wood dovetail drawers with concealed glides

**FULL EXTENSION DRAWER UPGRADE (g)** - View and access all drawer contents with full-extension glides, 3/4"\* drawer sides, all-wood dovetail drawers with concealed glides with optional Smart Stop stopping mechanism. *Drawer upgrade available with select & ply select construction options.*

\* Prior to final processing. Actual final dimension may vary.

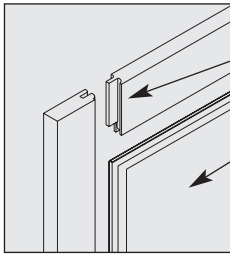
## Hinges and Hardware

- ▶ Aristokraft's doors are mounted on fully concealed self-closing, adjustable steel hinges.
- ▶ Hinges and hardware are chosen for reliability and beauty.
- ▶ Full overlay styles feature 6-way adjustable hinges.
- ▶ All styles have a profiled edge or reverse bevel on doors and drawer fronts except Durham, Eastland, Ellsworth, Grayson, Kincaid, Landen, Nantucket, Roxburgh, Saybrooke, Sutherland, Teagan, Wentworth, and Winstead in which hardware is recommended.

## How to Order FX Drawer Guide Upgrade and Optional Smart Stop Accessory

- ▶ To order FX Drawer Guide Upgrade, add "FX" after the product code (i.e. B18FX, DB18FX, etc.)
- ▶ Optional Smart Stop accessory (FXSMARTSTOP) available for field installation. (See page 229.) Compatible with all cabinets with FX noted after the product code.

## Door Construction



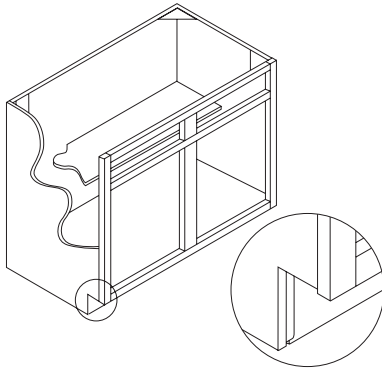
▶ **Door Construction** - Frames are tongue-and-groove glued and pin-tacked for strength and squareness. (Except miter and thermofoil door styles\*)

Solid wood or veneered center panel depending on style.

\* Miter styles include Avalon, Durham, Grayson, Landen, Radford, Saybrooke, Sutherland, and Wentworth. Thermofoil styles include Augusta and Nantucket.

- ▶ **Augusta and Nantucket:** 3/4" medium density fiberboard with antique or white thermofoil surface and a raised center panel door.
- ▶ **Durham and Ellsworth:** 3/4" medium density fiberboard frame wrapped with Decorative Laminate Veneer with a recessed laminate center panel.
- ▶ **Eastland:** 3/4" thick solid maple frame with a raised solid center panel.
- ▶ **Teagan:** 3/4" furniture board core with veneer front and back.
- ▶ **Grayson, Kincaid, Manchester, Pioneer, Radford, Saybrooke, and Westbury:** 3/4" thick solid birch, cherry, hickory, maple, or oak frame with a raised veneer center panel.
- ▶ **Avalon, Landen, Oakland, Roxburgh, Sinclair, Sutherland, Wentworth, and Winstead:** 3/4" thick solid birch, cherry, maple, or oak frame with a 3/16" recessed veneer center panel (front and back).

## Base Cabinet Construction



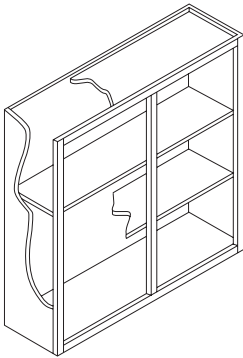
### STANDARD

- ▶ Four furniture board corner braces.
- ▶ 3/8" furniture board back.
- ▶ 3/4" x 1 1/2" solid wood face frame (3" center stile).
- ▶ 1/2" half-depth furniture board shelf.
- ▶ 3/8" furniture board bottom.
- ▶ 3/8" furniture board sides with matching laminate (Standard & Select).
- ▶ 3/8" x 4" furniture board recessed toe kick (recessed 3 3/8"). Recessed toe kick is unfinished furniture board and requires toe kick cover (TOEKICK/TOEKICK8).
- ▶ Standard cabinet interior features Aristex® natural maple laminate except White styles which feature Aristex® white laminate.

### UPGRADES

- ▶ 3/8" 5-ply, plywood sides (Ply Select).

## Wall Cabinet Construction



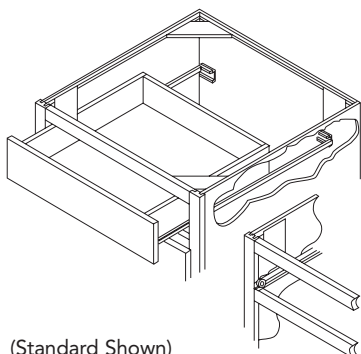
### STANDARD

- ▶ 1/2" furniture board top.
- ▶ 3/8" furniture board sides with matching laminate (Standard & Select).
- ▶ 1/2" furniture board adjustable shelves (15 lbs. maximum weight per square foot) (Standard).
- ▶ 3/4" x 1 1/2" solid wood face frame.
- ▶ 3/8" furniture board back.
- ▶ 1/2" furniture board bottom.
- ▶ Standard cabinet interior features Aristex® natural maple laminate except White styles which feature Aristex® white laminate.

### UPGRADES

- ▶ 3/8" 5-ply, plywood sides (Ply Select).
- ▶ 3/4" furniture board adjustable shelves on Wall and Tall Cabinets increase strength 30-50% (Select & Ply Select).

## Drawer Construction



(Standard Shown)

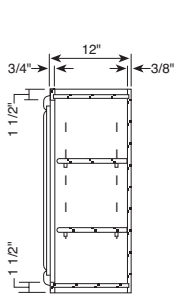
### STANDARD

- ▶ Self-closing, epoxy-coated guides for smooth, quiet action. Rated at 100 lbs. capacity per drawer.
- ▶ 1/2" furniture board sides and back to match the Aristex® interior laminate finish (Standard).
- ▶ Adjustable side-mount drawer guides with double rails for more stability (Standard).
- ▶ Double rollers for smoother action.
- ▶ 3/8" furniture board drawer bottom with Aristex® laminate finish (Standard).
- ▶ 20" deep drawer box with stapled butt joint construction for base and 21" deep vanities (Standard).
- ▶ 15 1/2" deep drawer box with stapled butt joint construction for 18" deep vanities (Standard).
- ▶ Drawer bottom stapled into sides, front, and back (Standard).
- ▶ Rail captured two sides to prevent excess play.
- ▶ Built-in drawer stop.

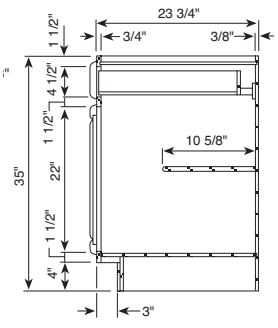
### UPGRADES

- ▶ 3/4"\* thick all-wood drawer sides and back with a clear topcoat (Select & Ply Select).
- ▶ Adjustable undermount drawer guides with double rails for more stability (Select & Ply Select).
- ▶ 1/4" plywood laminated drawer bottom (Select & Ply Select).
- ▶ 21" deep drawer box with dovetail construction for base cabinets (Select & Ply Select).
- ▶ 18" deep drawer box with dovetail construction for 21" deep vanities (Select & Ply Select).
- ▶ Drawer bottom fully captured for added strength and optimum load capacity (Select & Ply Select).
- ▶ FX Drawer Guide Upgrade and Smart Stop Accessory Option.

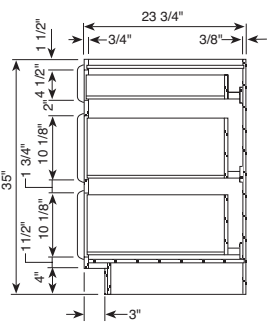
\* 3/4" prior to final processing. Actual final dimension may vary.



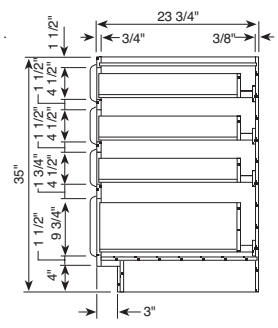
**Wall Cabinet**



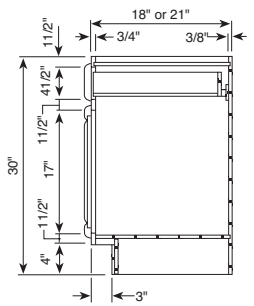
**Base Cabinet**



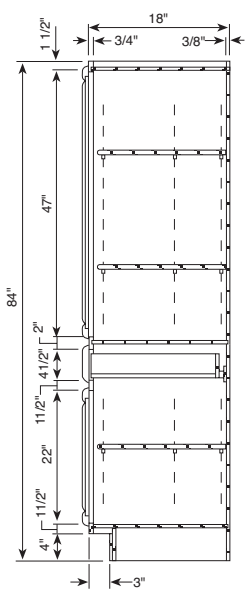
**3-Drawer Base Cabinet**



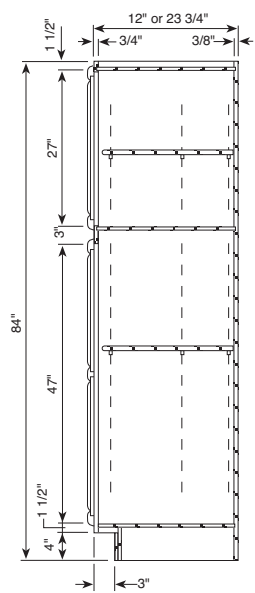
**4-Drawer Base Cabinet**



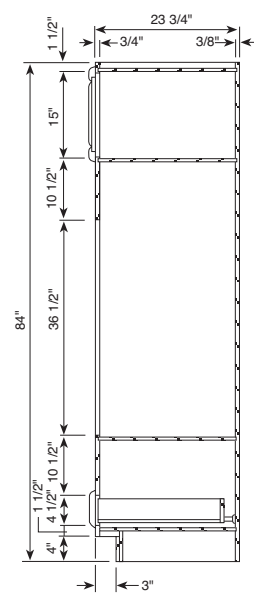
**30" High Vanity Cabinet**



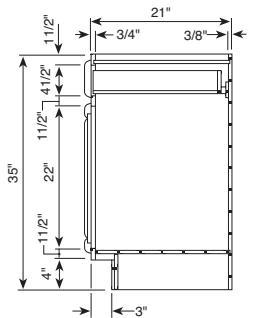
**Linen Closet w/Drawer**  
3/4" & 7/16" Overlay Styles



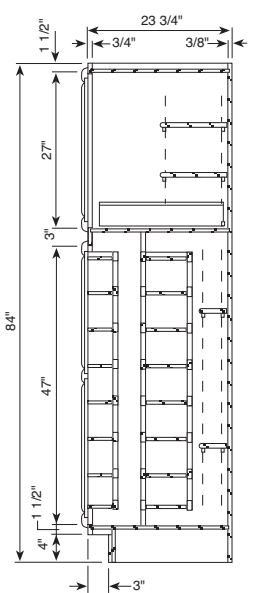
**Utility Cabinet**  
Shelves not included with 30" & 36" wide cabinets.



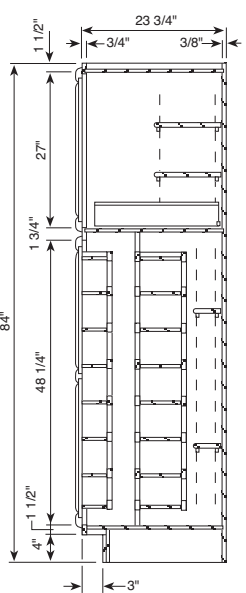
**Double Oven Cabinet**



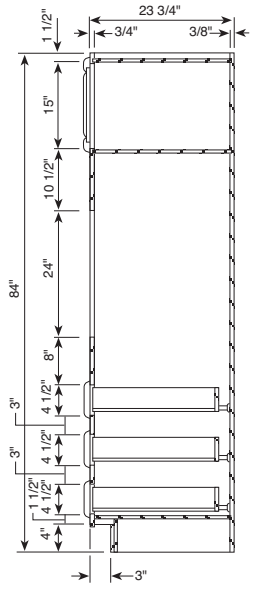
**35" High Vanity Cabinet**



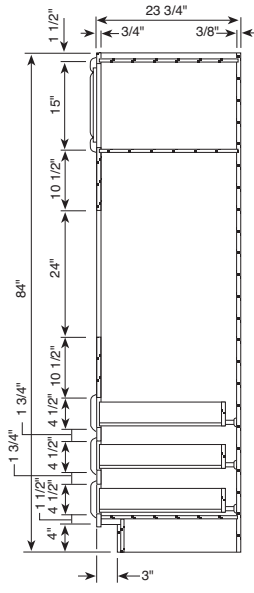
**Pantry Cabinet**  
3/4" & 7/16" Overlay Styles



**Pantry Cabinet**  
1 1/4" Overlay Styles



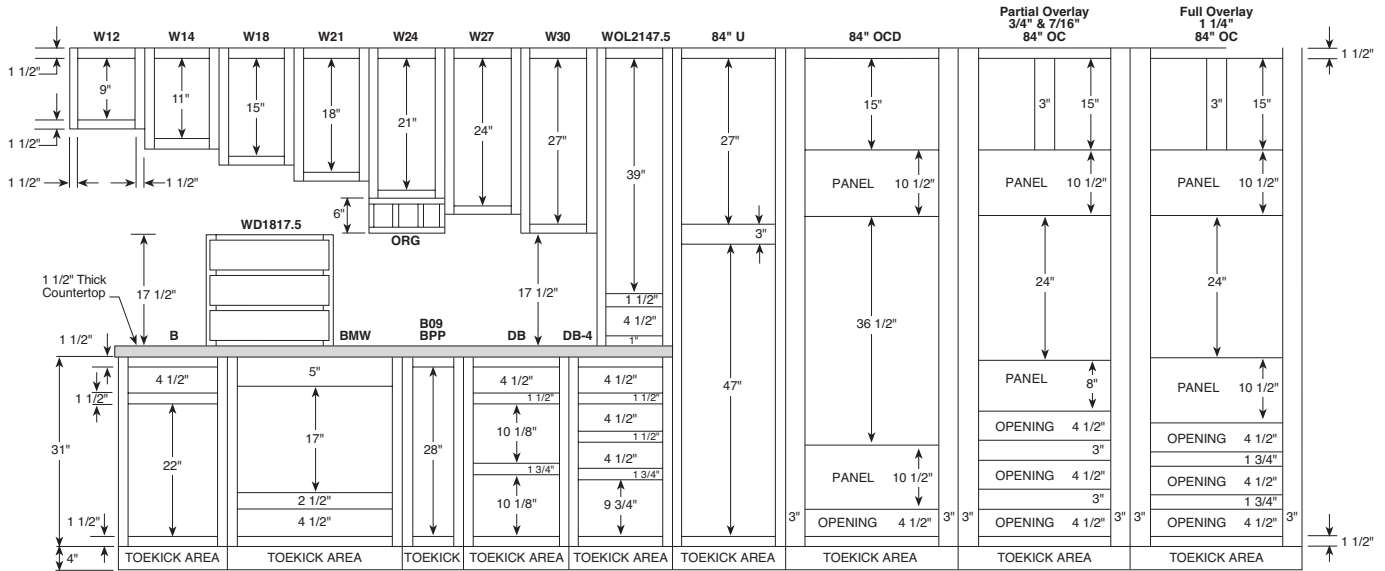
**Single Oven Cabinet**  
3/4" & 7/16" Overlay Styles



**Single Oven Cabinet**  
1 1/4" Overlay Styles

## 84" High Application

Number after wall cabinet represents height of cabinet.



- ▶ 1 1/2" Top and Bottom Rails - Wall and Base Cabinets.
- ▶ 1 1/2" Vertical Stiles, except Pantry/OC.
- ▶ 3" Center Vertical Rails on Wall and Base Cabinets to Divide Double Door Cabinets 27" Wide and Over.
- ▶ Drawer Box Opening Heights are 4 1/2" for Small and 9 3/4" or 10 1/8" for Large (Deep) Drawers.

### Full Overlay Door Styles:

- ▶ 1/4" Reveal Around Doors (1/4" of Face Frame Shows).
- ▶ Frame Opening + 2 1/2" = Door Size for Base/Wall Cabinets (Horizontal) (Except with Pantry and OC cabinets).
- ▶ 4 1/2" High Drawer Opening = 5 3/4" Drawer Front.

### 7/16" Overlay Door Styles:

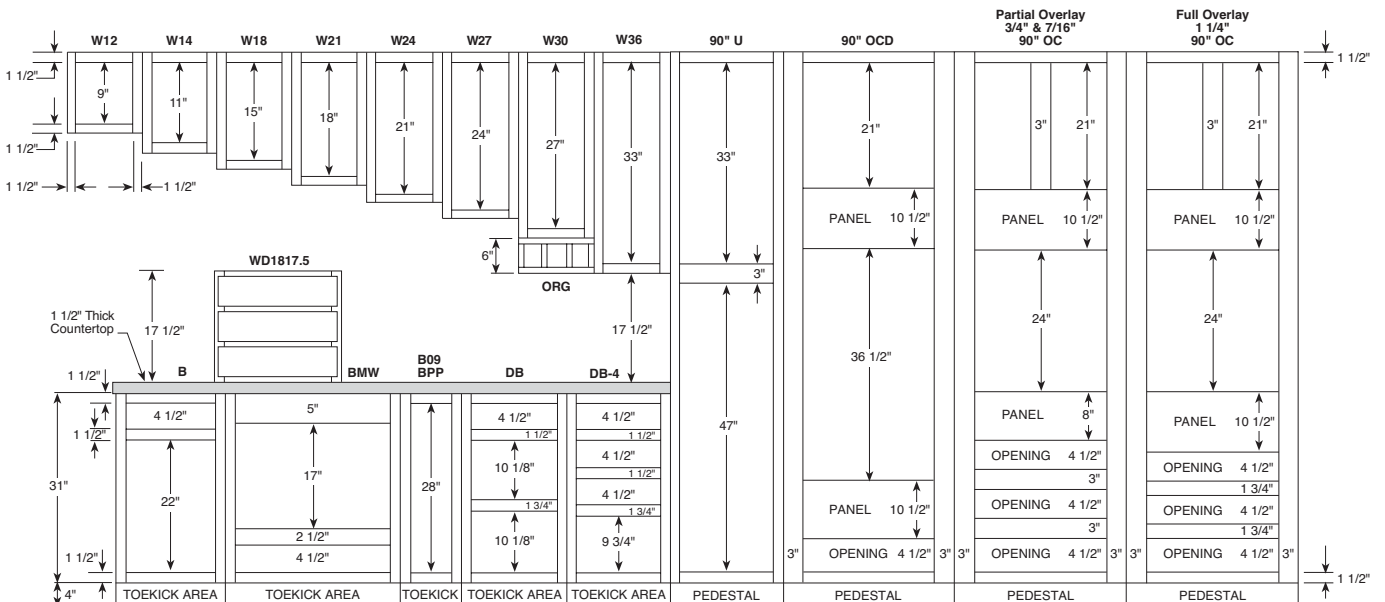
- ▶ 1 1/16" Reveal Around Doors (1 1/16" of Face Frame Shows).
- ▶ Frame Opening + 7/8" = Door Size for Base/Wall Cabinets.
- ▶ 4 1/2" High Drawer Opening = 5 1/8" Drawer Front.

### 3/4" Overlay Door Styles:

- ▶ 3/4" Reveal Around Doors (3/4" of Face Frame Shows).
- ▶ Frame Opening + 1 1/2" = Door Size for Base/Wall Cabinets.
- ▶ 4 1/2" High Drawer Opening = 5 3/8" Drawer Front.

## 90" High Application

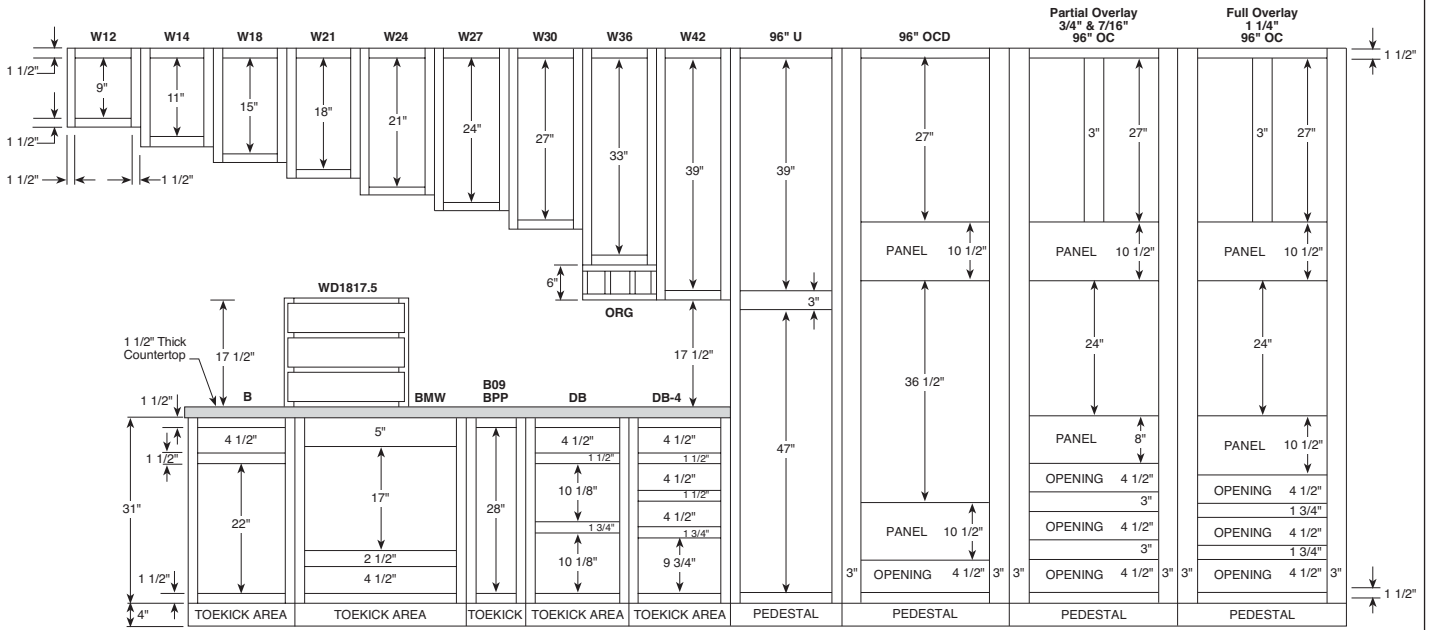
Number after wall cabinet represents height of cabinet.



CABINET SPECIFICATIONS

## 96" High Application

number after wall cabinet represents height of cabinet



- ▶ 1 1/2" Top and Bottom Rails - Wall and Base Cabinets.
- ▶ 1 1/2" Vertical Stiles, except Pantry/OC.
- ▶ 3" Center Vertical Rails on Wall and Base Cabinets to Divide Double Door Cabinets 27" Wide and Over.
- ▶ Drawer Box Opening Heights are 4 1/2" for Small and 9 3/4" or 10 1/8" for Large (Deep) Drawers.

### Full Overlay Door Styles:

- ▶ 1/4" Reveal Around Doors (1/4" of Face Frame Shows).
- ▶ Frame Opening + 2 1/2" = Door Size for Base/Wall Cabinets (Horizontal) (Except with Pantry and OC cabinets).
- ▶ 4 1/2" High Drawer Opening = 5 3/4" Drawer Front.

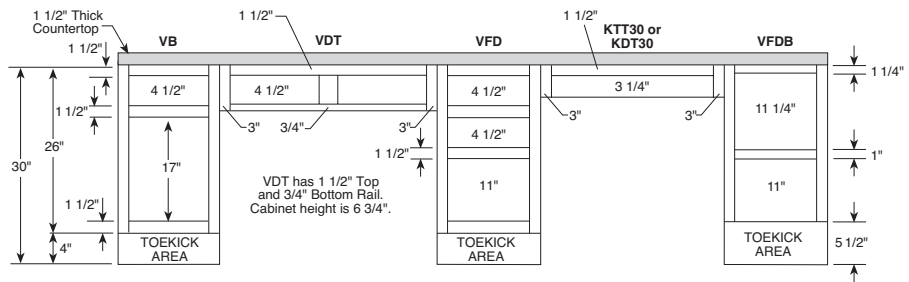
### 7/16" Overlay Door Styles:

- ▶ 1 1/16" Reveal Around Doors (1 1/16" of Face Frame Shows).
- ▶ Frame Opening + 7/8" = Door Size for Base/Wall Cabinets.
- ▶ 4 1/2" High Drawer Opening = 5 1/8" Drawer Front.

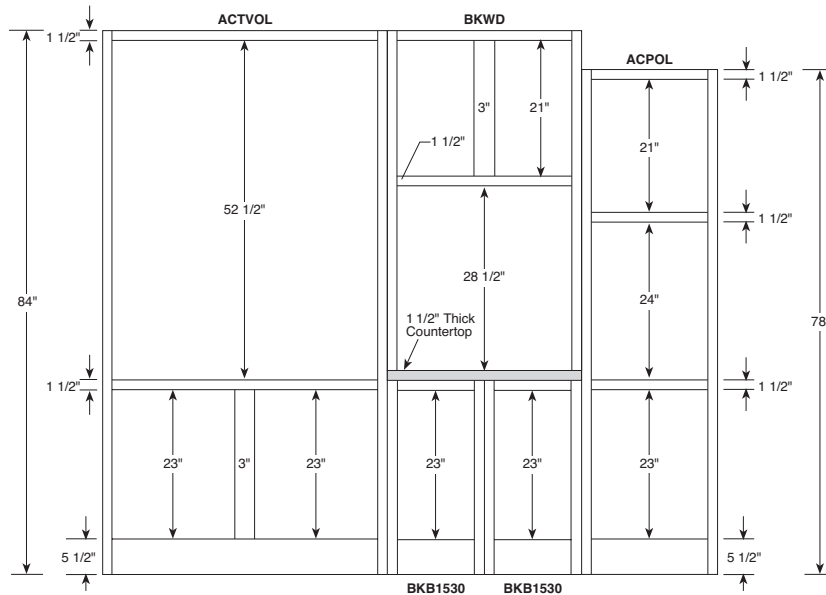
### 3/4" Overlay Door Styles:

- ▶ 3/4" Reveal Around Doors (3/4" of Face Frame Shows).
- ▶ Frame Opening + 1 1/2" = Door Size for Base/Wall Cabinets.
- ▶ 4 1/2" High Drawer Opening = 5 3/8" Drawer Front.

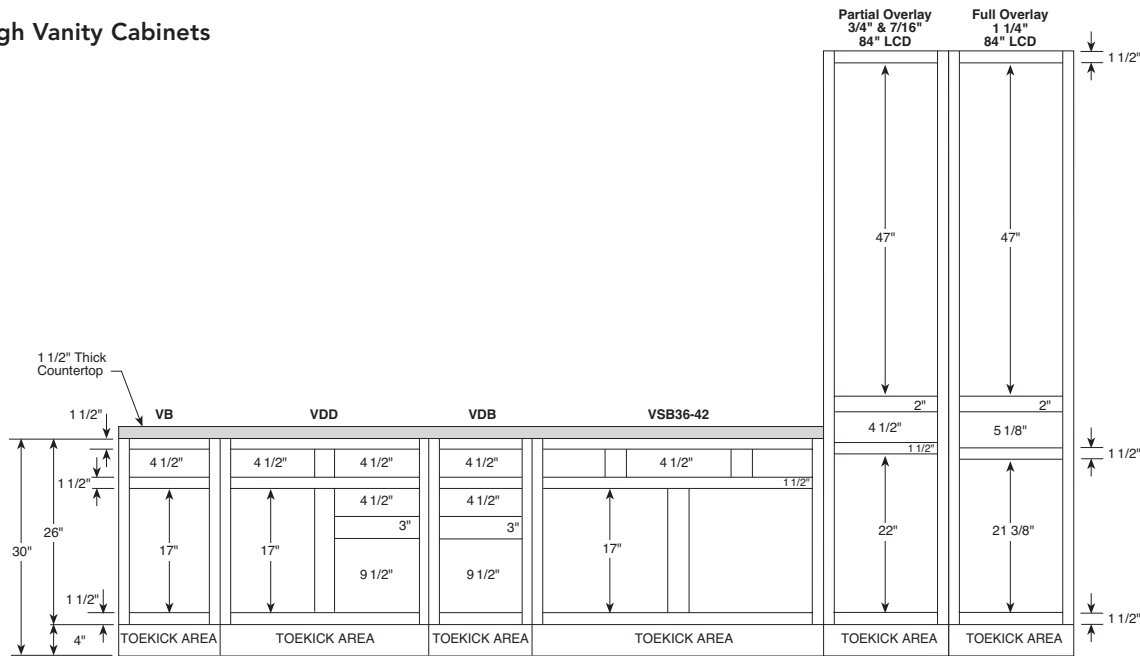
## 30" High Desk Cabinets



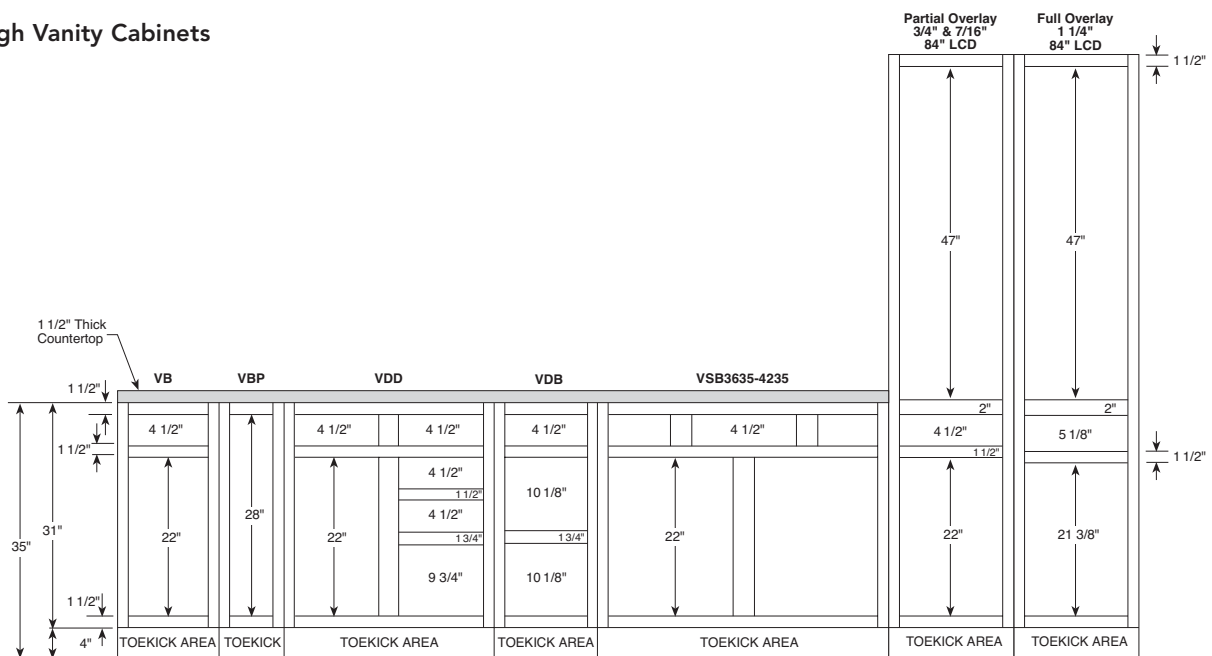
## Activity Center



**30" High Vanity Cabinets**



**35" High Vanity Cabinets**



**Tips to the Installer**

#10 x 2 1/2" installation screws are furnished and packaged inside all cabinets for attachment to wall. Proper wall stud or ceiling joist installation is essential for Wall and Peninsula cabinets to support weight. Whenever possible, cabinets should be attached to each other for additional strength. Excessive weight should not be put on cabinets hung by themselves. Shimming may be required to ensure proper alignment. Wallboard alone is not strong enough to support the cabinets.

Aristokraft's Warranty does not cover damage caused by improper installation. Please be sure to install cabinets properly and review all installation instructions. If you have questions, please contact your representative or customer service.

**Wood Dust Warning**

When cutting, sanding, sawing, or shaping cabinets or wood products, you are likely to generate wood dust. For your own safety, Aristokraft recommends that you wear a protective mask to prevent breathing wood dust. We also recommend eye protection to avoid injury by flying wood chips or sawdust during cabinet installation.